



Marine Notice No. 13 of 2021

*Notice to all Shipowners, Fishing Vessel Owners, Agents, Shipmasters, Skippers, Fishers,
Yachtsmen and Seafarers*

Mobility of Sediment Waves and Sand Banks in the Irish Sea Phase 2 (MOVE 2) Survey – CV21035

1. Notice of Activity

The Department of Transport has been advised that the MOVE 2 Survey will be carried out from **26 to 30 March 2021** in the south Irish Sea. This survey is being carried out in support of ongoing research at the SFI Centre for Energy, Climate and Marine research and innovation (MaREI: <https://www.marei.ie/>) and the Irish Centre for Research in Applied Geosciences (iCRAG: <https://www.icrag-centre.org/>).

2. Overview and Location of the Survey Activity

The survey will involve the use of multibeam echosounders and sub bottom profilers at the sites indicated in Appendix 1. In order to characterise the lithological characteristics of the seabed, sediment grab samples will be taken at the locations indicated in Appendix 2. Grab samples will be taken within a 3 nautical mile range of the locations detailed in Appendix 2.

3. Details of Vessel

The survey will be carried out by the **R.V. Celtic Voyager** (callsign: **EIQN**). The vessel will display appropriate lights and signals. Work will be performed on a 24-hour schedule. Acoustic surveying using a multibeam echosounder and seismic sub-bottom surveys using a sparker/pinger system will be performed out during both day and night operations in accordance with safe operating practices regarding MMO procedures and cognisant of fishing gear. Sediment sampling using cores will be carried out during daylight hours due to limited ship mobility. ADCP units will be deployed and retrieved at both night and day as dictated by survey conditions and will be adequately marked.

4. Additional Information

For further information, please contact:

Aodhán Fitzgerald,
Research Vessel Operations Section Manager,
Marine Institute
+353872488765
aodhan.fitzgerald@marine.ie.

Shauna Creane,
Chief Scientist,
University College Cork
+353873881588
shauna.creane@ucc.ie

All mariners are reminded of their responsibilities under the International Collision Regulations and are reminded of [Marine Notice No. 17 of 2007](#), which gives general advice in relation to the activities of vessels engaged in survey work for hydrographic, seismic, fishing research and underwater operations.

The International Regulations for Prevention of Collisions at Sea (COLREGS) are implemented in Irish law by the *Merchant Shipping (Collision Regulations) (Ships and Water Craft on the Water) Order 2012* [S.I. No. 507 of 2012], and the *Signals of Distress (Ships) Rules 2012* [S.I. No.170 of 2012]. [See Marine Notice No. 06 of 2013](#). These Statutory Instruments may be purchased by mail order from Government Publications, Office of Public Works, 52 St. Stephen's Green, Dublin 2. Tel: (01) 6476834/1890-213434. They are also available online at: www.irishstatutebook.ie

Note: Marine Notices are issued purely for maritime safety and navigation reasons and should not be construed as conferring rights or granting permissions.

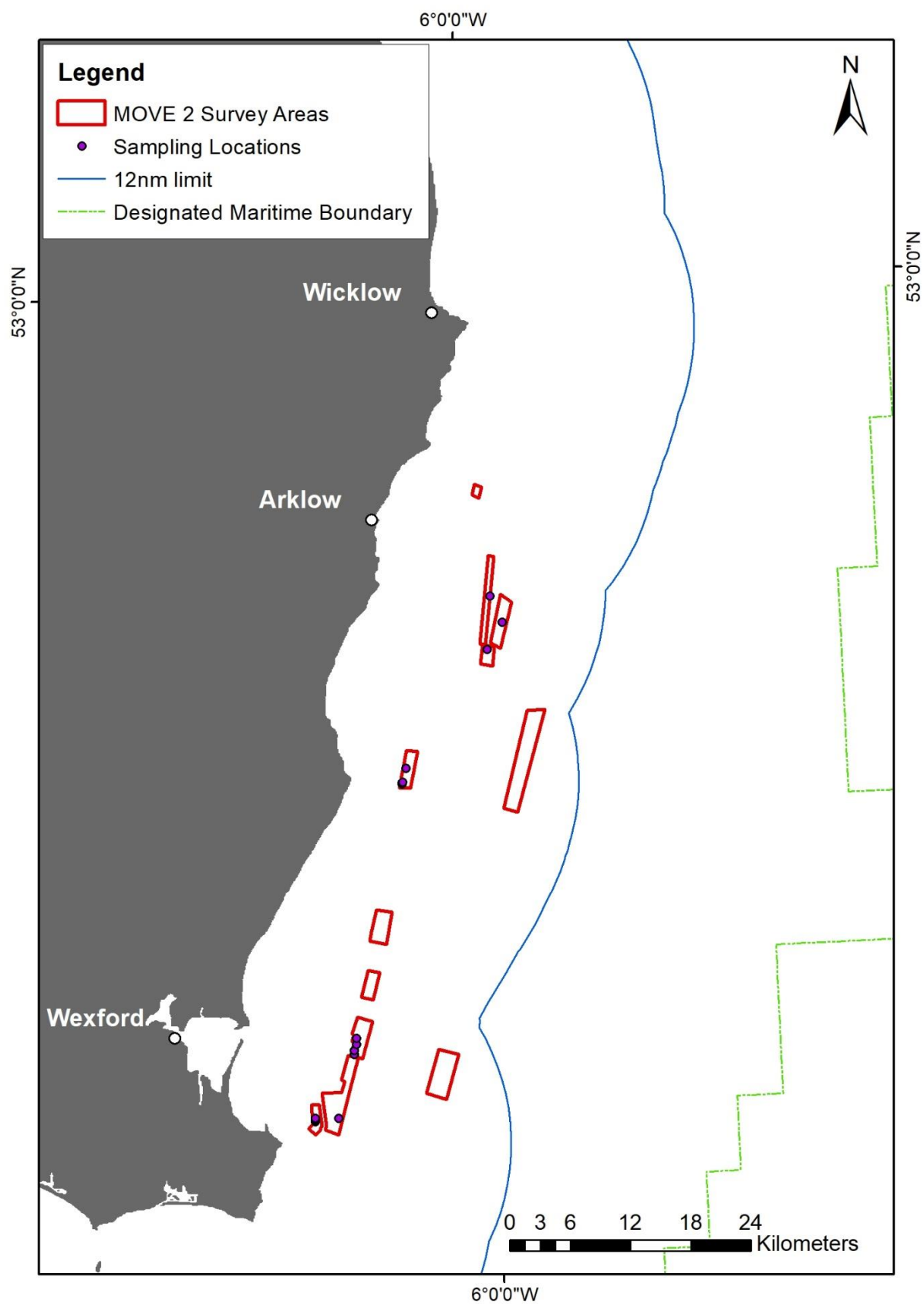
Irish Maritime Administration,
Department of Transport,
Leeson Lane, Dublin 2, D02 TR60, Ireland.

19/03/2021

Encl: Annex/Appendix

For any technical assistance in relation to this Marine Notice, please contact:
The Marine Survey Office, email: MSO@transport.gov.ie
For general enquiries, please contact the Maritime Safety Policy Division, email:
MaritimeSafetyPolicyDivision@transport.gov.ie
Written enquiries concerning Marine Notices should be addressed to:
Dept. of Transport, Maritime Safety Policy Division, Leeson Lane, Dublin 2, D02 TR60, Ireland.
email: MarineNotices@transport.gov.ie or visit us at: www.gov.ie/transport

Appendix 1. Map of proposed study sites and activities



Appendix 2. Sampling Locations

The table provided below documents the planned locations for day grab sampling. All positions based on WGS 84 datum.

ID	Latitude	Longitude
1	52° 19' 4.316" N	006° 12' 19.777" W
2	52° 19' 16.593" N	006° 12' 17.325" W
3	52° 19' 36.693" N	006° 12' 6.663" W
4	52° 19' 56.344" N	006° 12' 3.073" W
5	52° 15' 40.328" N	006° 13' 53.695" W
6	52° 15' 32.683" N	006° 15' 55.450" W
7	52° 15' 37.412" N	006° 15' 55.494" W
8	52° 15' 40.705" N	006° 15' 55.627" W
9	52° 15' 43.792" N	006° 15' 55.772" W
10	52° 33' 28.369" N	006° 7' 11.081" W
11	52° 33' 32.107" N	006° 7' 10.239" W
12	52° 33' 34.213" N	006° 7' 9.604" W
13	52° 34' 18.895" N	006° 6' 47.472" W
14	52° 40' 29.604" N	005° 59' 14.316" W
15	52° 43' 21.188" N	005° 58' 47.315" W
16	52° 41' 54.557" N	005° 57' 47.401" W