



## Marine Notice No. 37 of 2020

*Notice to all Shipowners, Fishing Vessel Owners, Agents, Shipmasters, Skippers, Fishers,  
Yachtsmen and Seafarers*

### **Planned Submarine Cable Hydrographic and Geophysical route survey Ireland Territorial Waters**

#### **1. Notice of Activity**

The Department of Transport, Tourism and Sport has been advised that a hydrographic survey company will conduct a marine route survey for a proposed new submarine communications cable between Ireland and Iceland.

#### **2. Duration of Activity**

The survey is due to take place from Thursday 10<sup>th</sup> September and will be completed by early November 2020.

#### **3. Details of the operation are as follows:**

24/7 cable route survey operations including the stern deployment of a sonar towfish tethered with steel cable at varying water depths to collect geophysical/bathymetric mapping data for a proposed undersea telecommunications cable. The towfish towing wire layback will be 3x water depth behind the vessel stern. The maximum water depth of tow operations will be 1500 meters. The sonar sensor will be towed approximately 20-40 meters from the seafloor. Operations in water depths greater than 1500 meters will utilize hull mounted equipment only. Total length of the survey route from 15m WD within Ireland TS and through to the boundary of Ireland EEZ with the High Seas, is approximately 540 kilometres.

#### **4. Details of the Survey Vessel**

The survey will be completed using the **RV Ridley Thomas** callsign (**V7JK2**) Research Vessel. The vessel will be restricted in its ability to manoeuvre. All vessels and fishing activity requested to maintain a 1 nautical mile (1 NM) closest point of approach.

#### **5. Fisheries Liaison Contact Information**

Please contact Jim McMahon at jim@mdmeng.ie, telephone +353 (0)1 8536500 for all fisheries related queries.

## 6. Location of Survey Activity

The R/V RIDLEY THOMAS will survey within the Irish TS, Irish CZ and Irish EEZ along the survey centreline of the route. Coordinates of major boundaries along the survey route, together with estimated dates at which the vessel is likely to be in position, are summarised in the Table below.

Table 1: Summary of Entry and Exit Coordinates and Dates for Survey within Ireland Territorial Waters

Estimate Date of Survey	Comments	Latitude	Longitude
12 <sup>th</sup> September 2020	15m WD Contour	53° 13.667'N	009° 06.406'W
22 <sup>nd</sup> September 2020	Exit Ireland TS	53° 09.070'N	010° 18.881'W
14 <sup>th</sup> October 2020	1500 WD Contour	54° 17.108'N	011° 50.688'W
17 <sup>th</sup> October 2020	Exit Ireland EEZ	56° 42.000'N	012° 20.668'W

Table 2: Summary of Centreline Coordinates for Survey from 15m WD to 12nm boundary  
Approximate route length is 97 kilometres. It is anticipated that this section will be surveyed between 12th September and 22nd September, 2020.

LATITUDE	LONGITUDE		LATITUDE	LONGITUDE
53° 13.667' N	09° 06.406' W		53° 01.064' N	09° 33.361' W
53° 13.34' N	09° 06.565' W		53° 01.077' N	09° 33.421' W
53° 12.937' N	09° 09.838' W		53° 01.556' N	09° 35.492' W
53° 12.625' N	09° 11.305' W		53° 02.707' N	09° 39.468' W
53° 12.583' N	09° 11.875' W		53° 03.562' N	09° 40.803' W
53° 10.315' N	09° 20.374' W		53° 03.798' N	09° 42.109' W
53° 10.023' N	09° 21.094' W		53° 03.809' N	09° 43.512' W
53° 09.618' N	09° 21.568' W		53° 03.973' N	09° 44.874' W
53° 06.303' N	09° 23.283' W		53° 05.123' N	09° 47.693' W
53° 03.884' N	09° 24.908' W		53° 05.893' N	09° 51.448' W
53° 03.038' N	09° 25.348' W		53° 07.010' N	09° 53.759' W
53° 02.224' N	09° 26.309' W		53° 08.078' N	09° 55.832' W
53° 01.530' N	09° 27.473' W		53° 08.581' N	09° 57.496' W
53° 00.961' N	09° 28.858' W		53° 08.611' N	10° 01.137' W
53° 00.887' N	09° 29.727' W		53° 09.059' N	10° 18.700' W
53° 01.082' N	09° 31.334' W		53° 09.070' N	10° 18.881' W

Table 3: Summary of Centreline Coordinates for Survey from 12nm boundary to 1500m WD  
Approximate route length is 168 kilometres. It is anticipated that this section will be surveyed between 22nd September and 14th October, 2020.

LATITUDE	LONGITUDE		LATITUDE	LONGITUDE
53° 09.070' N	10° 18.881' W		54° 00.569' N	11° 38.737' W
53° 09.460' N	10° 25.091' W		54° 02.276' N	11° 40.094' W

53° 11.067' N	10° 31.862' W		54° 03.592' N	11° 40.973' W
53° 13.287' N	10° 35.629' W		54° 04.841' N	11° 41.906' W
53° 13.305' N	10° 35.661' W		54° 05.997' N	11° 42.947' W
53° 19.019' N	10° 45.660' W		54° 07.663' N	11° 44.137' W
53° 25.035' N	10° 56.151' W		54° 09.070' N	11° 45.256' W
53° 32.096' N	11° 08.481' W		54° 10.485' N	11° 46.316' W
53° 41.048' N	11° 24.276' W		54° 11.885' N	11° 47.376' W
53° 46.299' N	11° 28.169' W		54° 14.149' N	11° 49.084' W
53° 53.009' N	11° 33.134' W		54° 15.484' N	11° 49.674' W
53° 58.860' N	11° 37.458' W		54° 17.108' N	11° 50.688' W

Table 4: Summary of Centreline Coordinates for Survey from 1500m WD to the boundary of the Irish EEZ. Approximate route length is 270 kilometres. It is anticipated that this section will be surveyed between 14th October and 17th October, 2020.

LATITUDE	LONGITUDE
54° 17.108' N	11° 50.688' W
54° 29.618' N	11° 57.493' W
54° 29.641' N	11° 57.492' W
54° 39.511' N	11° 57.073' W
55° 08.107' N	11° 58.360' W
56° 14.474' N	12° 09.052' W
56° 22.556' N	12° 12.469' W
56° 36.678' N	12° 18.481' W
56° 42.000' N	12° 20.668' W

**All mariners are reminded of their responsibilities under the International Collision Regulations and are reminded of [Marine Notice No. 17 of 2007](#), which gives general advice in relation to the activities of vessels engaged in survey work for hydrographic, seismic, fishing research and underwater operations.**

The International Regulations for Prevention of Collisions at Sea (COLREGS) are implemented in Irish law by the *Merchant Shipping (Collision Regulations) (Ships and Water Craft on the Water) Order 2012* [S.I. No. 507 of 2012], and the *Signals of Distress (Ships) Rules 2012* [S.I. No.170 of 2012], see [Marine Notice No. 06 of 2013](#). These Statutory Instruments may be purchased by mail order from Government Publications, Office of Public Works, 52 St. Stephen's Green, Dublin 2 D02 DR67. Tel: (01) 6476834/1890-213434 and are also available online at: [www.irishstatutebook.ie](http://www.irishstatutebook.ie).

Note: Marine Notices are issued purely for maritime safety and navigation reasons and should not be construed as conferring rights or granting permissions.

Irish Maritime Administration,  
Department of Transport, Tourism and Sport,  
Leeson Lane, Dublin 2, D02 TR60, Ireland.

02/09/2020

Encl: Annex

For any technical assistance in relation to this Marine Notice, please contact:  
The Marine Survey Office, tel: +353-(0)1-678 3400.  
For general enquiries, please contact the Maritime Safety Policy Division, tel: +353-(0)1-678 3418.  
Written enquiries concerning Marine Notices should be addressed to:  
Dept. of Transport, Tourism and Sport, Maritime Safety Policy Division, Leeson Lane, Dublin 2, D02 TR60, Ireland.  
email: [MarineNotices@dtas.gov.ie](mailto:MarineNotices@dtas.gov.ie) or visit us at: [www.dttas.gov.ie](http://www.dttas.gov.ie)

Figure 1 The survey route within Ireland TS is illustrated below.

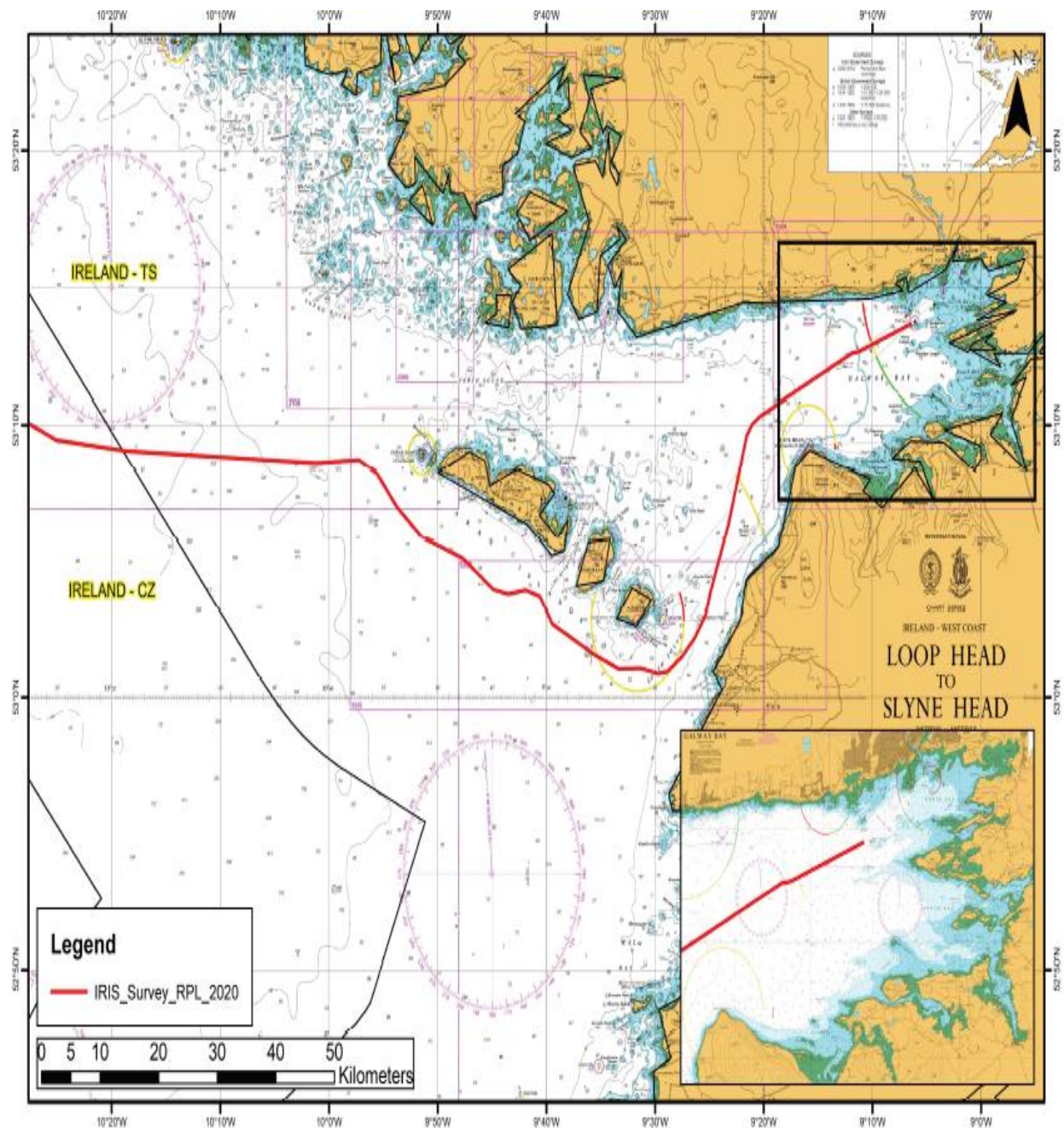


Figure 2: RV RIDLEY THOMAS Survey Centreline for subsea telecommunications cable route survey

